

Burleson Energy Limited



Onshore Texas

May 09



This presentation contains some references to forward looking assumptions, representations, estimates budgets and outcomes. These are uncertain by the nature of the business and no assurance can be given by Burleson Energy Limited that its expectations, estimates, budgets and forecast outcomes will be achieved. Actual results may vary materially from those expressed herein.

<http://www.burlesonenergyltd.com>



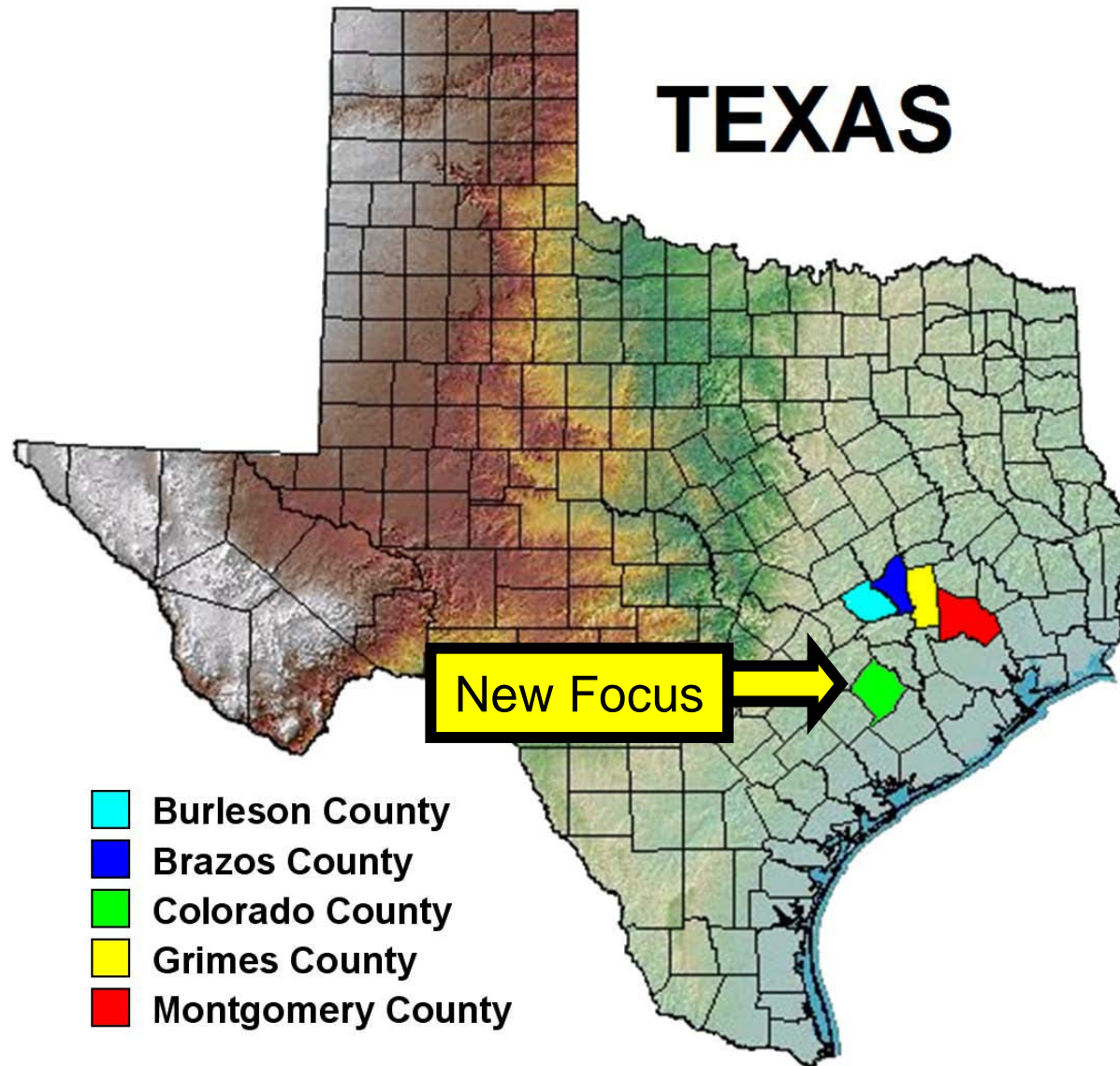
BUR's Future – shift of focus to new prospect play



3D seismic project in Colorado County, Texas

- ❑ 120 square miles
- ❑ Targeting gas and oil in Miocene, Frio, Yegua and Wilcox sandstone reservoirs
- ❑ Direct Hydrocarbon Indicators (bright spots) from 3D identify shallow targets
- ❑ Numerous targets already identified by 2D seismic and key areas secured with over 21,000 acres of leases and lease options
- ❑ Surrounding areas covered by 3D are prolific for oil and gas.
- ❑ Low risk and significantly lower cost drilling (vs. Chalk drilling)
- ❑ Includes large deeper (potential company maker) targets (Wilcox)
- ❑ Drilling to commence in July 2009

Extensive acreage – onshore Texas



BUR has

38% working interest in 21,000+ acres and new 3D seismic survey area in Colorado County

20% to 40% working interests in ~23,000 acres of Austin Chalk acreage in 4 Texas Counties.

3D Project

Typical well statistics – shallow targets



	MIOCENE	FRIO/V'BURG
Well depth	~1500' (450 m)	~3000' (920m)
Cost (drill & complete) US\$	~250k	~500k
Prospect Size (bcf) up to	3.7	1.4
Bcf per well, up to	0.9	0.8
Typical flow rate (mcf/d)	100-200	250-450
Hydrocarbon indicators	Gas chimneys/ shadows	Bright spots, shadows
	4	

3D Project

Typical well statistics – deeper targets

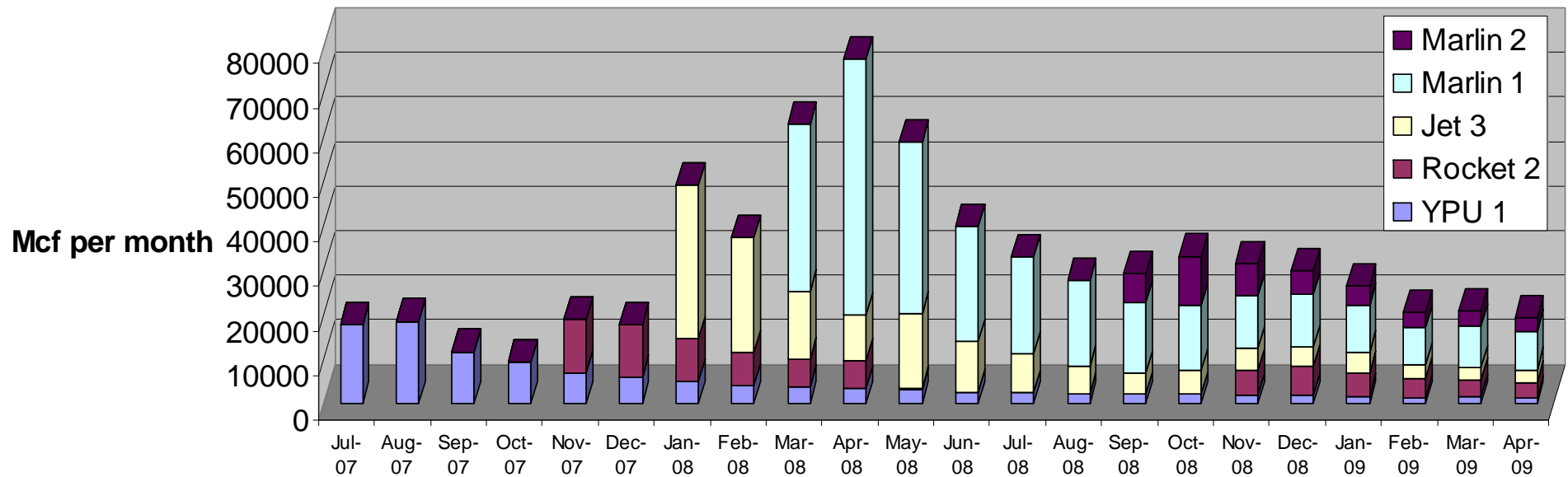


	YEGUA	WILCOX
Well depth	~5000' (1520 m)	7000+ (2130m+)
Cost (drill & complete) US\$	~600k	~2,000k
Prospect Size (bcf) up to	3.2	~30
Bcf per well, up to	2.4	14
Typical flow rate (mcf/d)	300-1500	3,000
3D Hydrocarbon indicators	Bright spots	
	5	

Current production from all 5 Austin Chalk wells



BUR net gas production



Existing Chalk acreage: future potential



- ❑ 20+ additional Chalk targets
 - Champions area as well as in Burleson and Brazos Counties
 - Farming-out future wells
- ❑ Numerous well re-entry candidates – targeting missed oil or gas from previous drilling
- ❑ Coal Seam Methane potential in shallow Wilcox Formation coals
- ❑ Fractured Eagle Ford Shale gas/oil potential

US partnership is key asset for future of BUR



- o BUR director and shareholder Dr Andy Kugler, heads AKG, operator of BUR's assets
 - o Dr. Kugler has 40+ years industry experience both international and onshore US,
 - o Mike Sandy (Sydney based BUR Exec Director) has over 30 years international resources industry experience and has been professionally associated with Dr. Kugler for 20+ years
- o Younger generation O&G industry personnel are a scarce and valuable asset. AKG Energy includes Dr. Kugler's three sons
 - o All hold industry related degrees from the University of Texas and have independent experience with major industry players.
 - o **Khib**, business and geosciences (BUR director)
 - o **Greigh**, business and petroleum land management (certified petroleum landman)
 - o **Karras**, petroleum engineer.
- o All are BUR shareholders

Value Proposition – Reserves, Revenue and Upside !



- o Five Chalk wells drilled – all on production
 - o Net production ~0.7 mmcf/d gas and 2 barrels per day condensate
 - o Net revenue after tax of ~\$A100k per month
- o Remaining reserves* of ~2 bcf gas & ~3500 b condensate
 - o NPV10 ~\$A2.7mm (April, 2009)
- o Valuable acreage position
 - o Colorado 3D 38% WI
 - o Chalk leases, 20 to 40% WI

* Estimated remaining reserves (EUR) attributable to BUR's net revenue interests (NRI) as of May 09

Corporate Information

- o Main shareholders: Kuglers, Macquarie Bank,
- o Enterprise Value ~ A\$5.5m (May 09)
 - o Market Cap ~ A\$5.5m,
 - o Cash at bank A\$1.5m (end March 09)
 - o Convertible notes (end 2010) ~\$1.5m

The Board:

Norm Zillman - Non Executive Chairman

- Geologist with 40+ years experience in the energy industry

John McAlwey – Non Executive Director

- Lawyer with 30+ years experience

Dr Andrew Kugler Jr. – Non Executive Director (see previous slides)

Khib Kugler – Non Executive Director (see previous slides)

Michael Sandy – Executive Director (see previous slides)

Contact:

Executive Director, Michael Sandy

Phone +61 2 9450 2002

Email info@burlesonenergy.com

Web www.burlesonenergy.com

Registered Office

C/- Kevin Lynn (Co Sec)

11 Rodborough Ave

Crows Nest NSW 2065